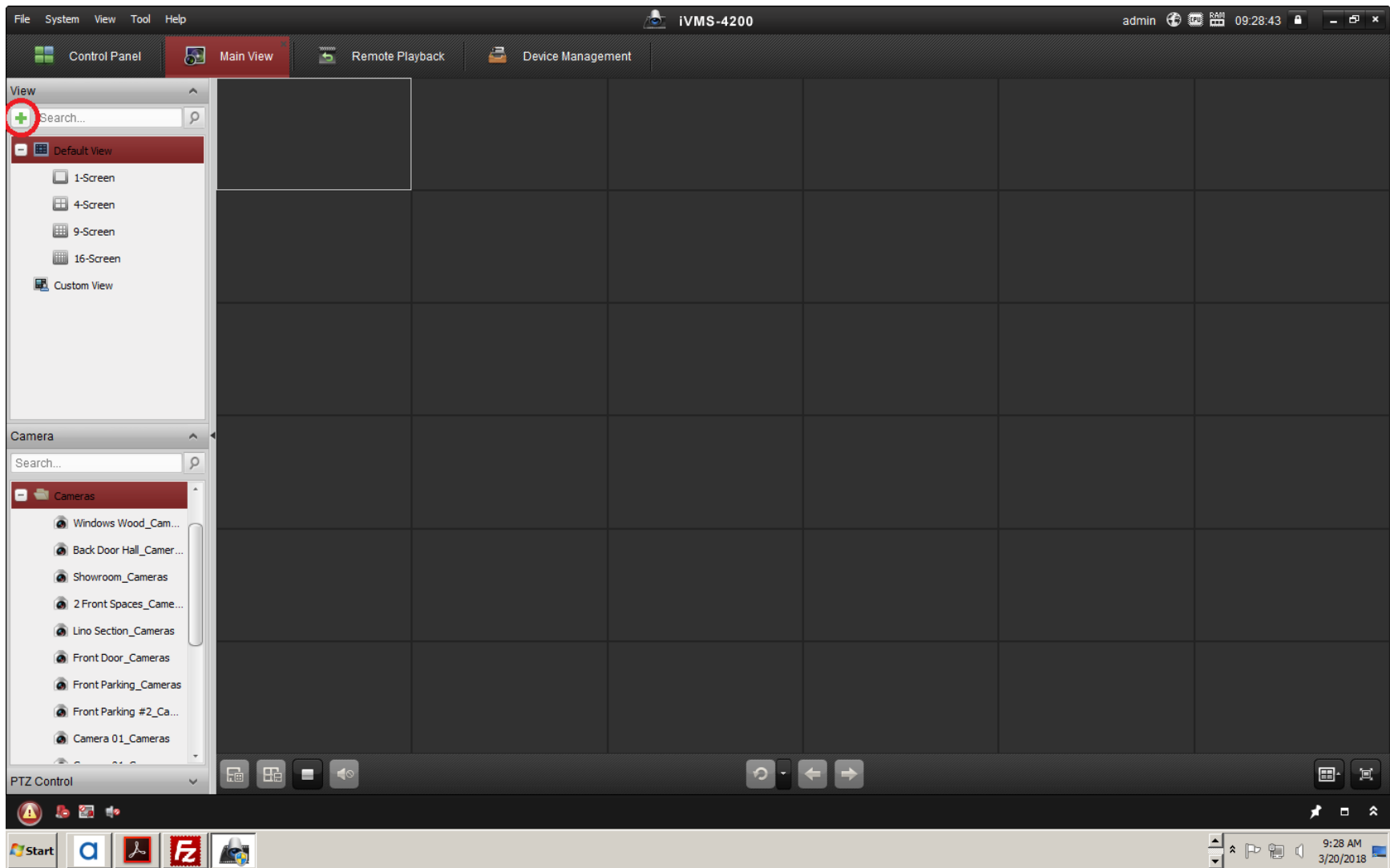
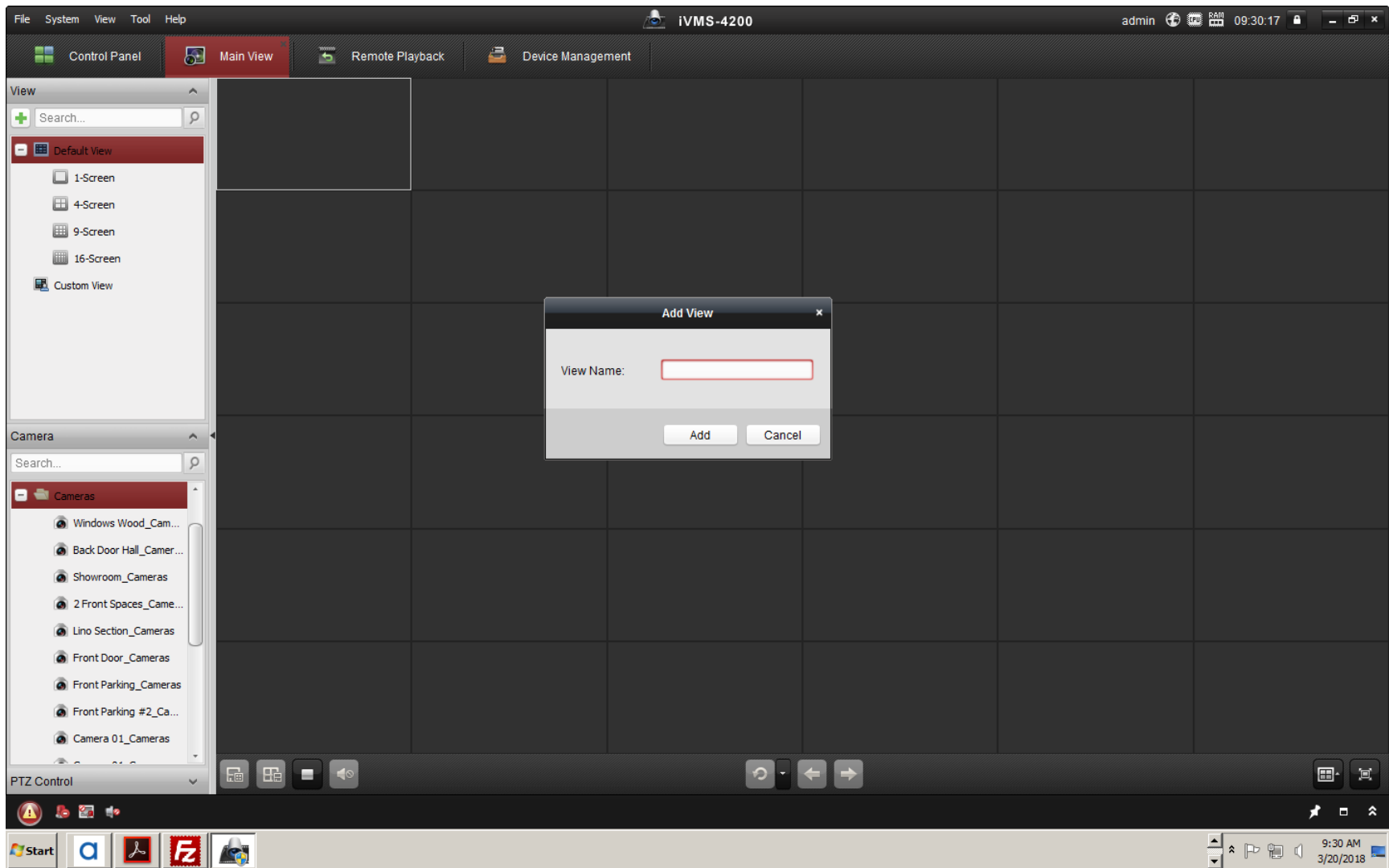


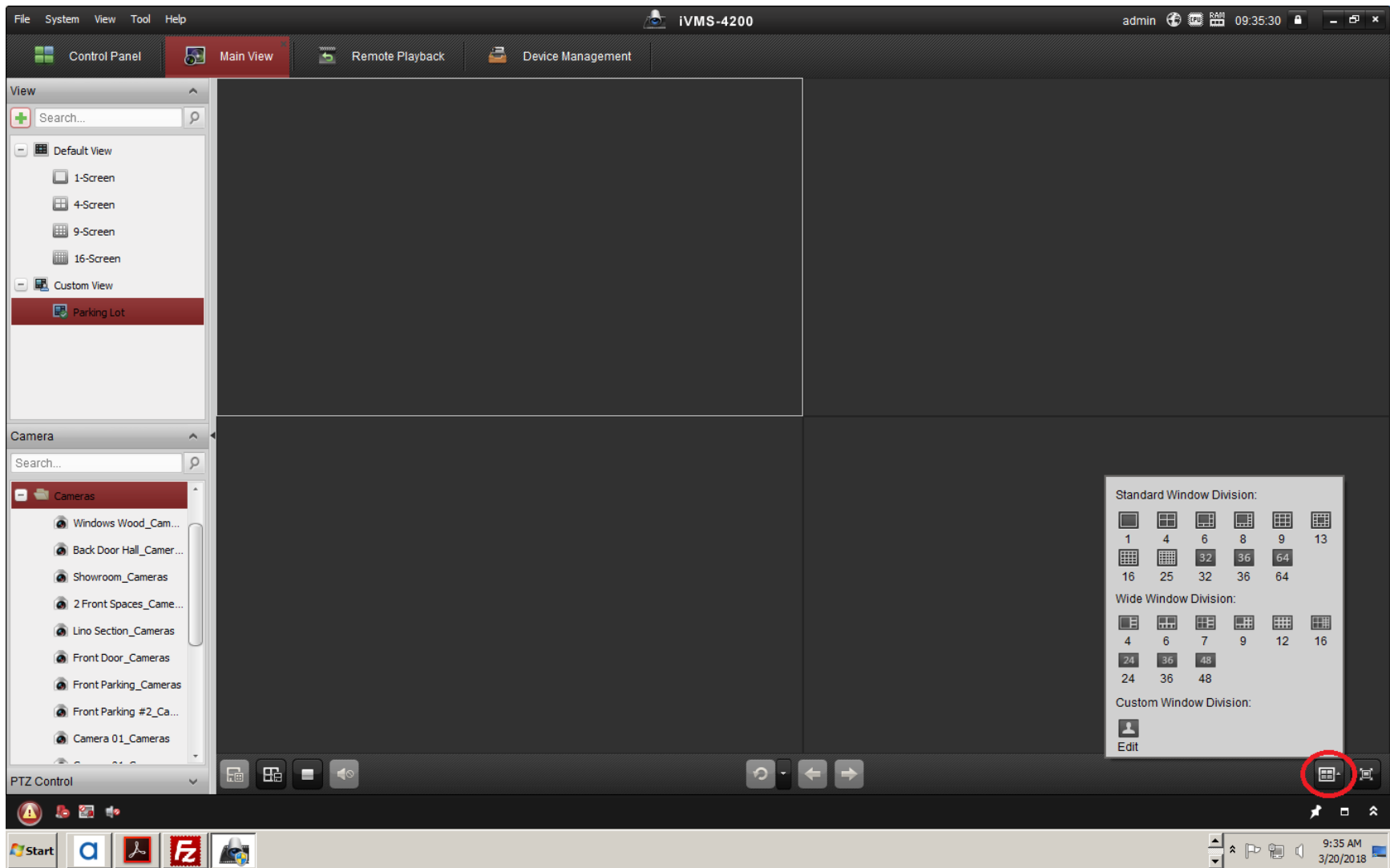
## **Creating Custom Views in IVMS4200**



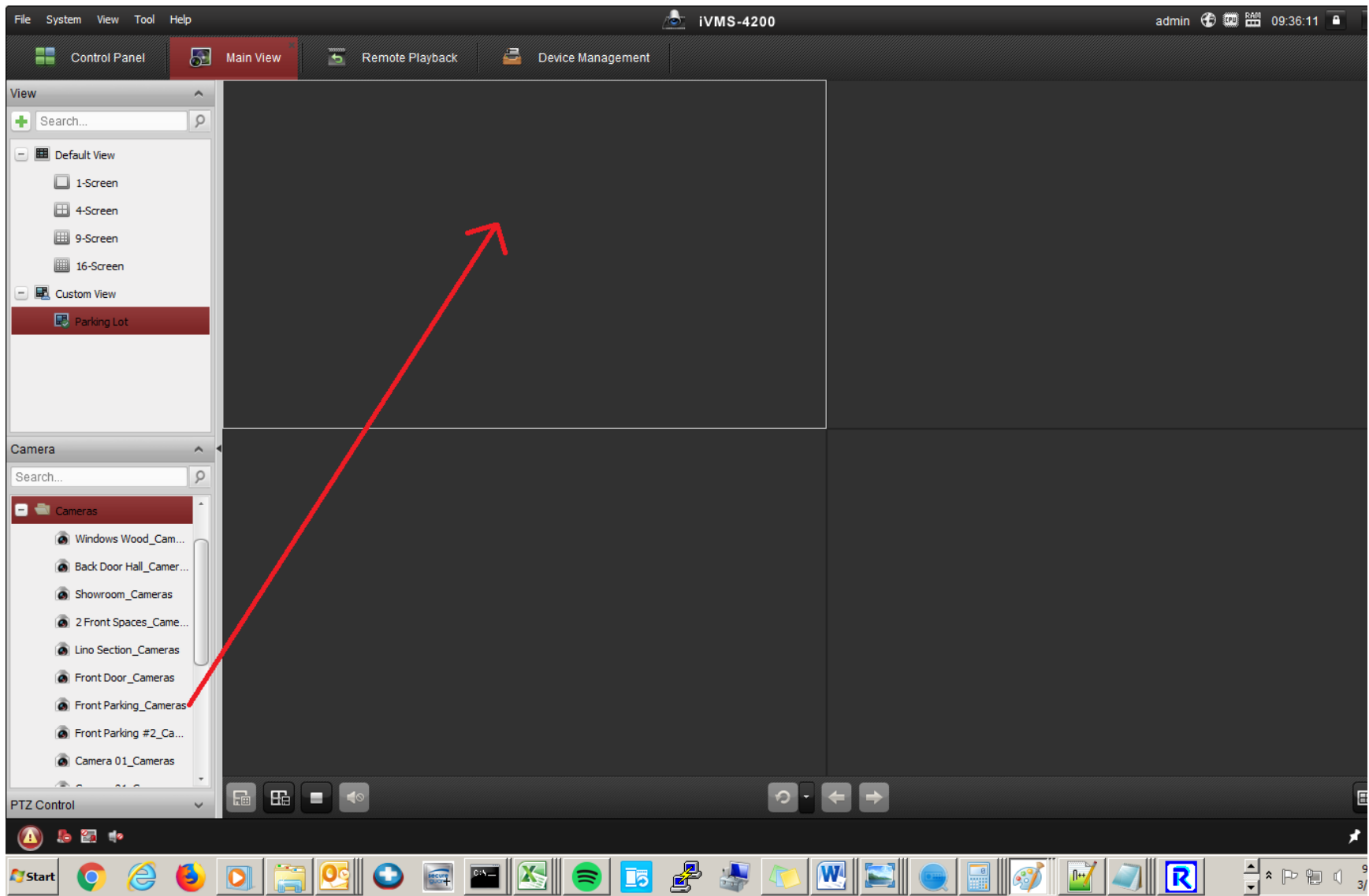
1) Left click on the green plus button near the top left corner of the program (circled in red).



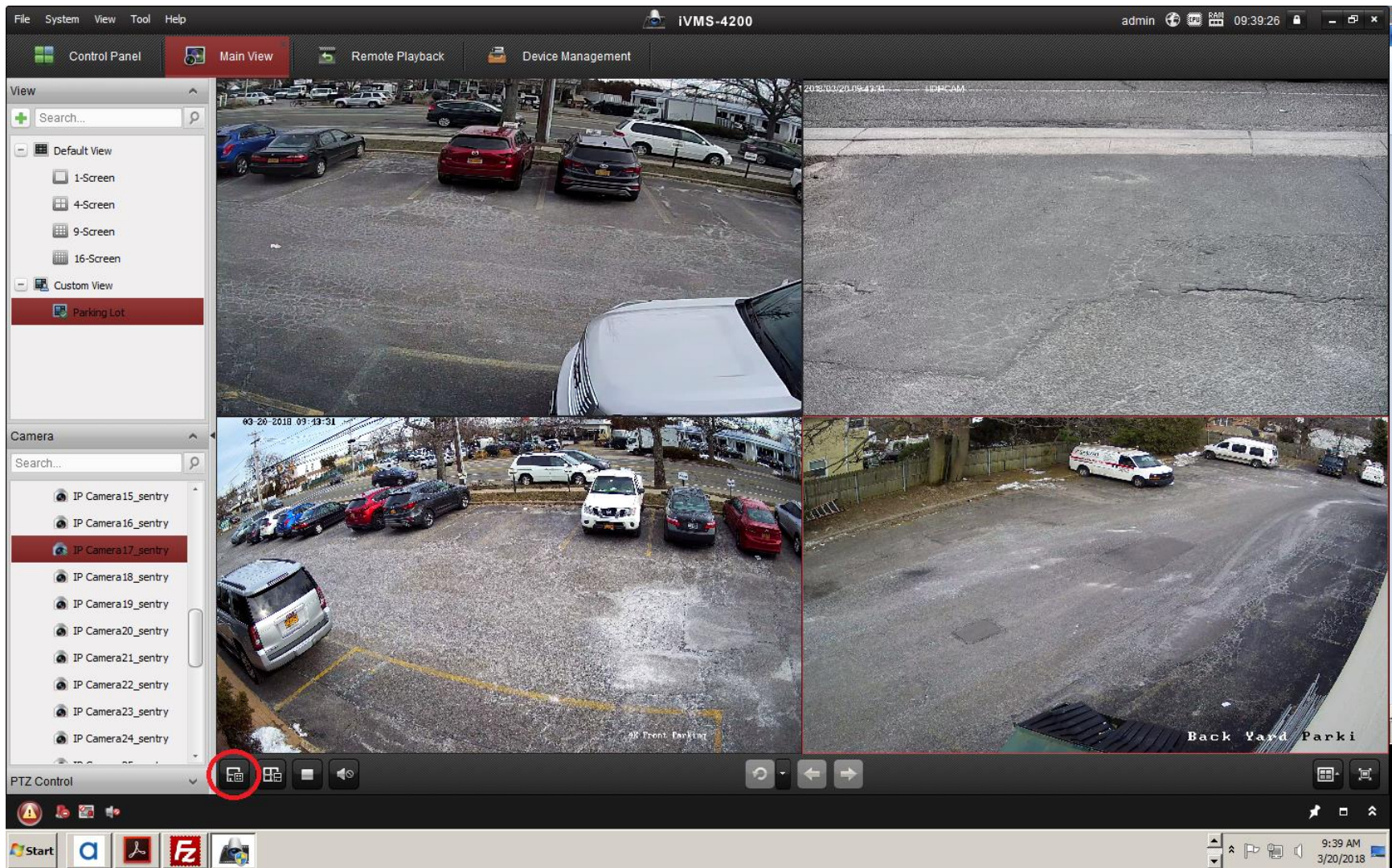
2) Type a descriptive name in for your view and left click on Add. I'm going to make a custom view labeled "Parking Lot" in this example.



3) Left click on the Window Division button (circled in red on the lower right area of the program). Pick the window division that has enough space for the amount of cameras you'd like to add to your view.



4) Drag over the cameras you'd like in your view, one-by-one, and drop each one in any empty box.



5) Once you have all the cameras you'd like in your view displaying live go ahead and left click on the Save View button (circled in red near the bottom left side of the program). Now any time you left click on your custom view in the left hand column underneath where it says "Custom View" you're view should appear.